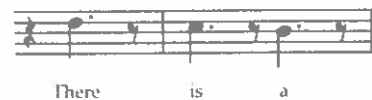


# Brotherhood Of Man

ked tempo – In 4



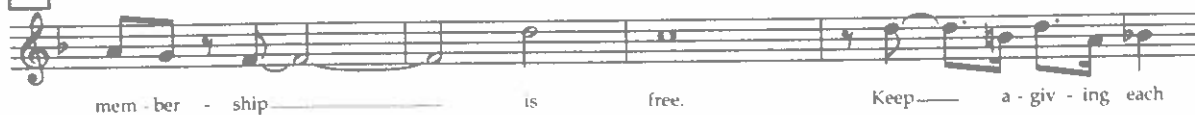
## C In 2 (a la Holy Rollers)



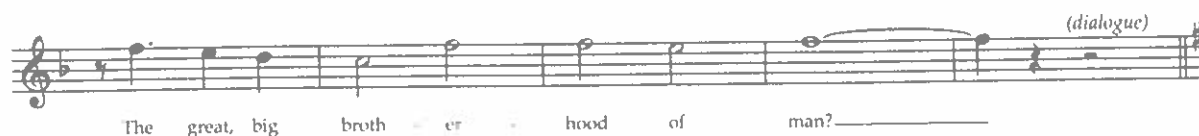
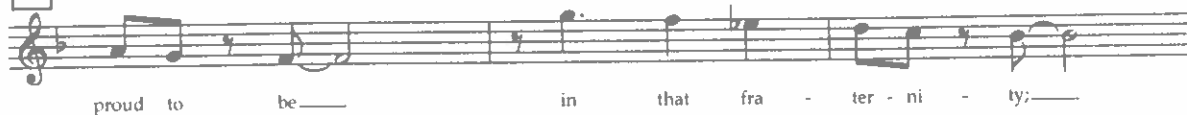
## D (FINCH)



## E



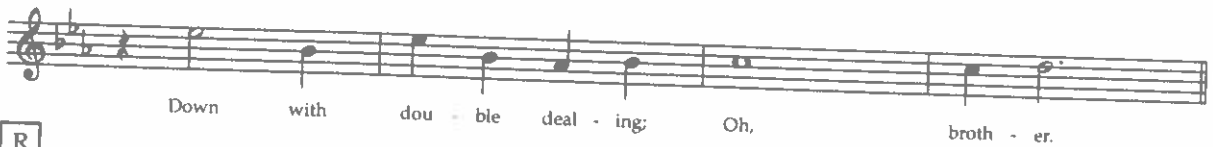
## F



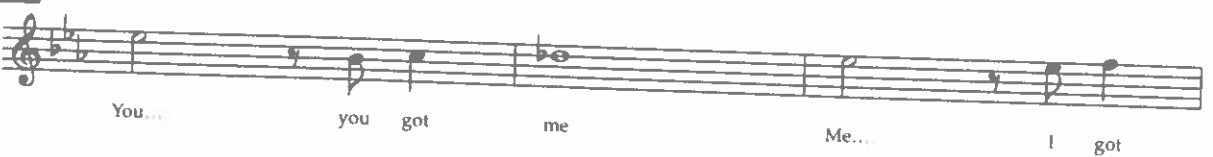
# Brotherhood Of Man

Q

(MISS JONES) *f*

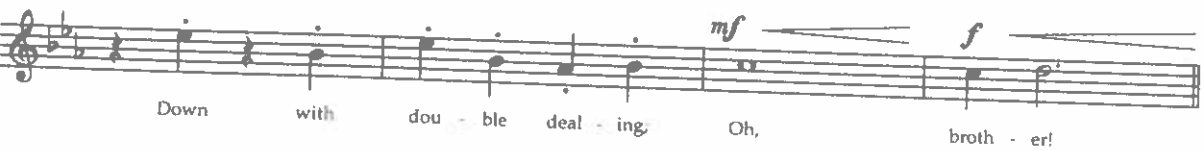


R



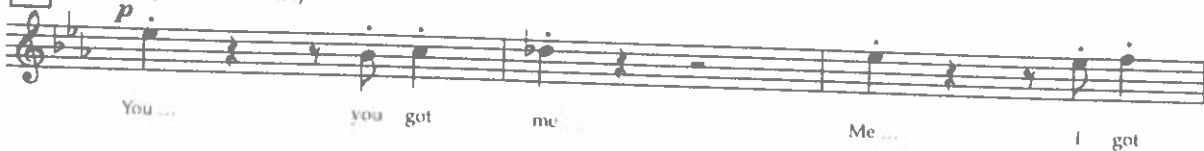
S

Stop Time  
(MISS JONES & MEN)



T

(MISS JONES & MEN)



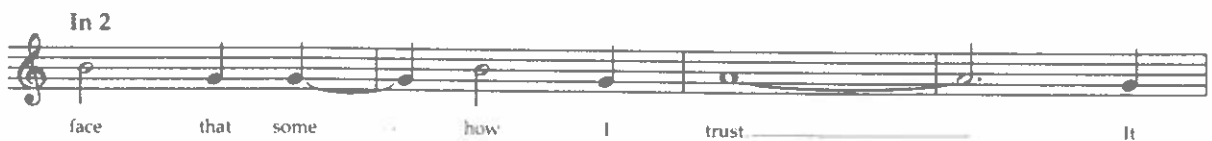
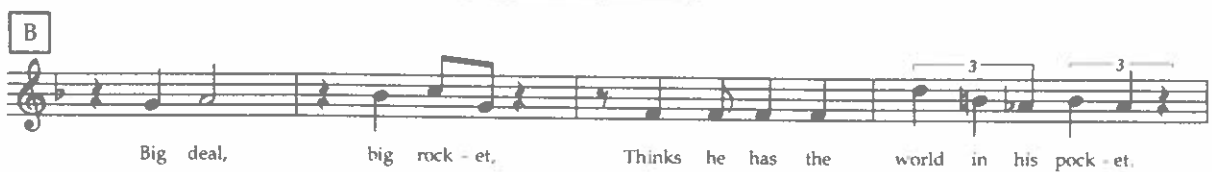
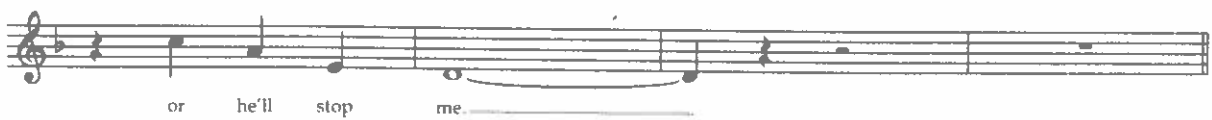
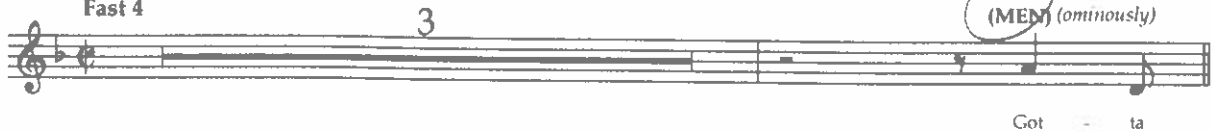
# I Believe In You

27

FINCH: Wish me luck, men.

ALL: Good luck.

Fast 4



(FINCH) *with self-assurance*

say it I must, say it I must! You have the

**D**

cool, clear eyes of a seek-er of wis-dom and truth;

**2**

Yet there's that up turned

**3 3 2**

chin, and the grin of im-pet-u-ous youth;

*religioso e molto legato* **E**

Oh, I be-lieve in you, I be-

lieve in you



**[D] (ROSEMARY)**

I'm wear-ing to night 'special-ly for him

E

Thus ir re sist ble Par is o rig nal's

Diagram 1 shows the first line of musical notation. It is a single staff in treble clef with a key signature of one flat (B-flat). The melody consists of the following notes: a half note G4 (labeled 'All'), a quarter note F4 (labeled 'paid'), a quarter note E4 (labeled 'for'), a quarter note D4 (labeled 'and'), and a half note C4 (labeled 'mine'). The word 'mine.' is followed by a horizontal line indicating a continuation of the melody.


**F**

I must look di-vine special-ly for him,

G

Sud - den - ly he will see me, And sud - den - ly he'll go dream - v, And

blame it all on his own mas - cu - line whim. . . . . Nev - er know - ing that ...


 This is the Reason,

So tempt - ing ly tight,

1 (ROSEMARY)



I'm wear - ing to - night Special ly for him.

For him For him

## Paris Original

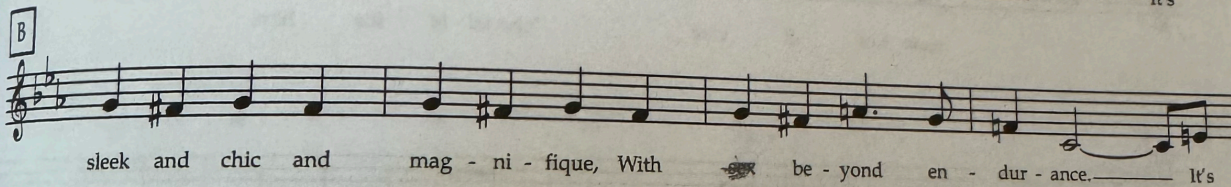
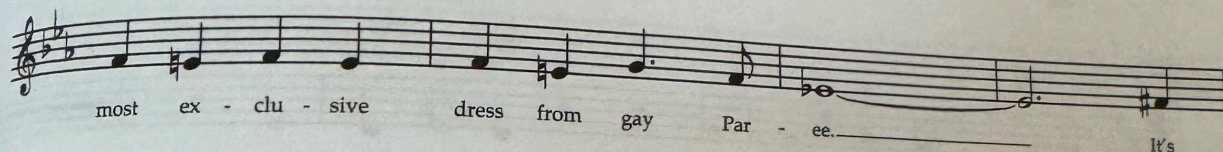
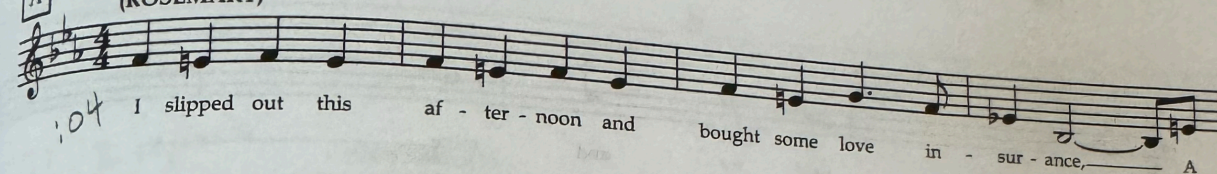
15

SMITTY: Maybe I will be, at that. I'm thinking of starting a secret rumor that I'm a nymphomaniac.

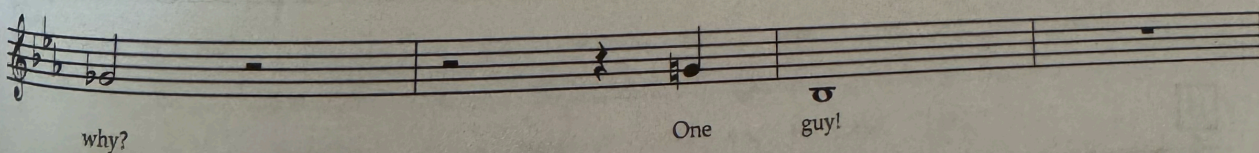
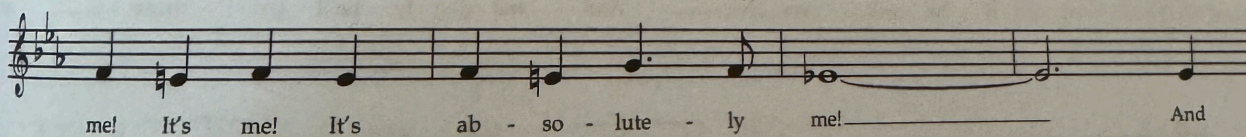
In 2

2

**A**  
Briskly - In 4  
(ROSEMARY)



style



**C**  
Slightly slower and deliberate

